

*LAY ECCLESIAL  
MINISTERS IN THE  
UNITED STATES*

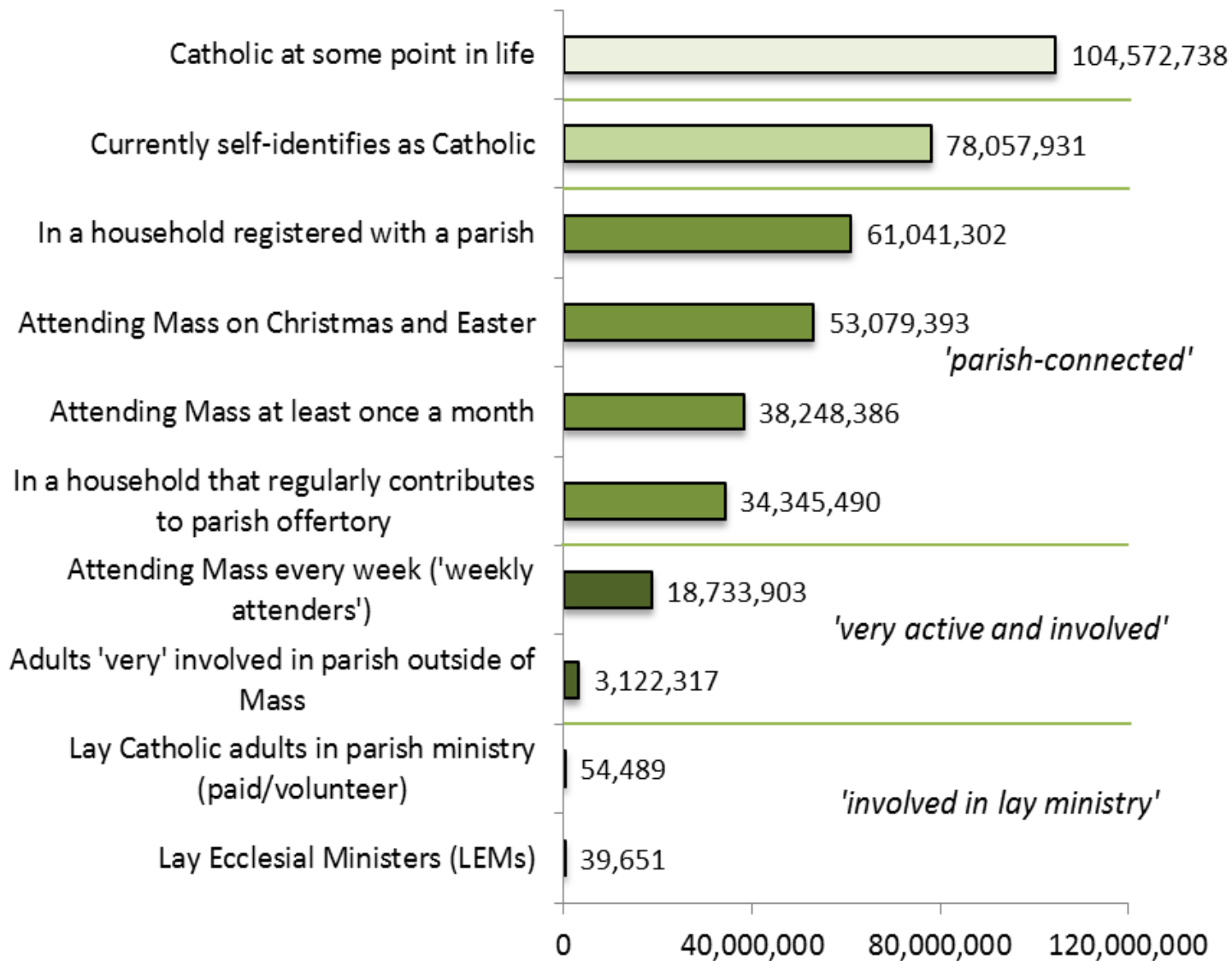
*JUNE 2015*





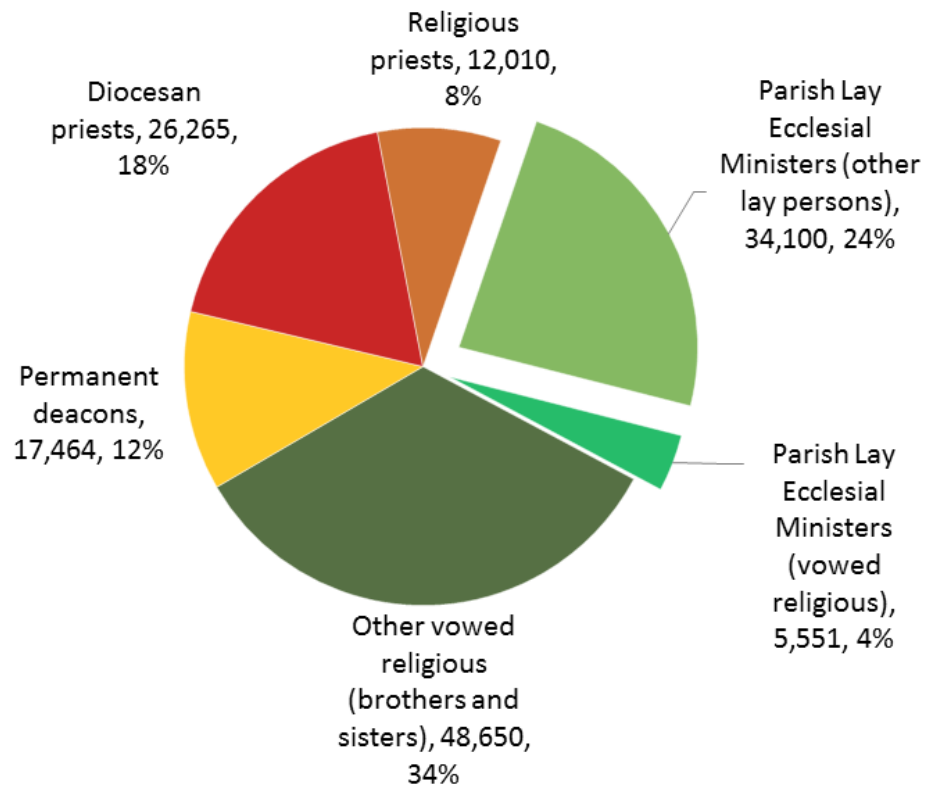
## U.S. Catholic Populations and Parish Life, 2014

Generally, each group is a subset of those above it

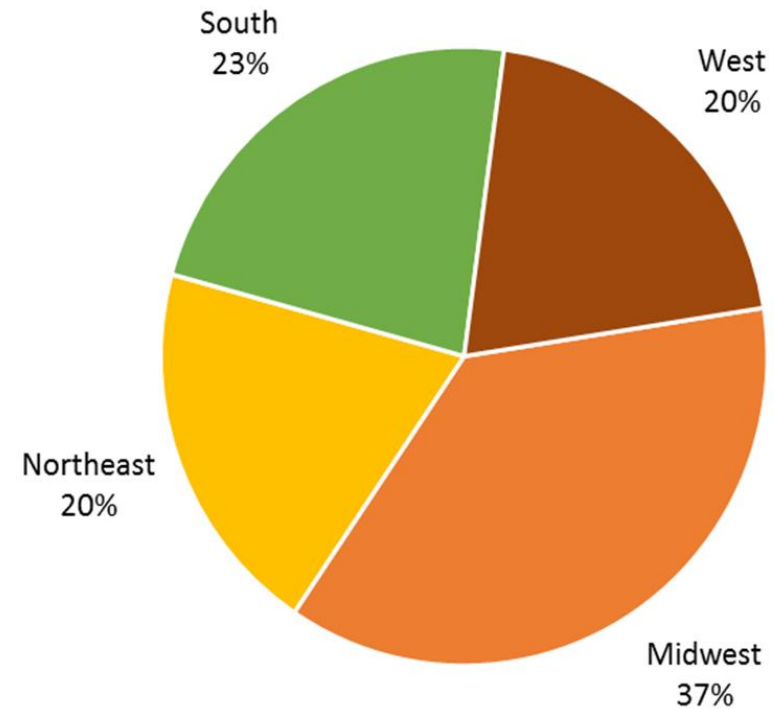


# The Ministerial Landscape

### Professional Workforce of the Catholic Church in the United States, 2014



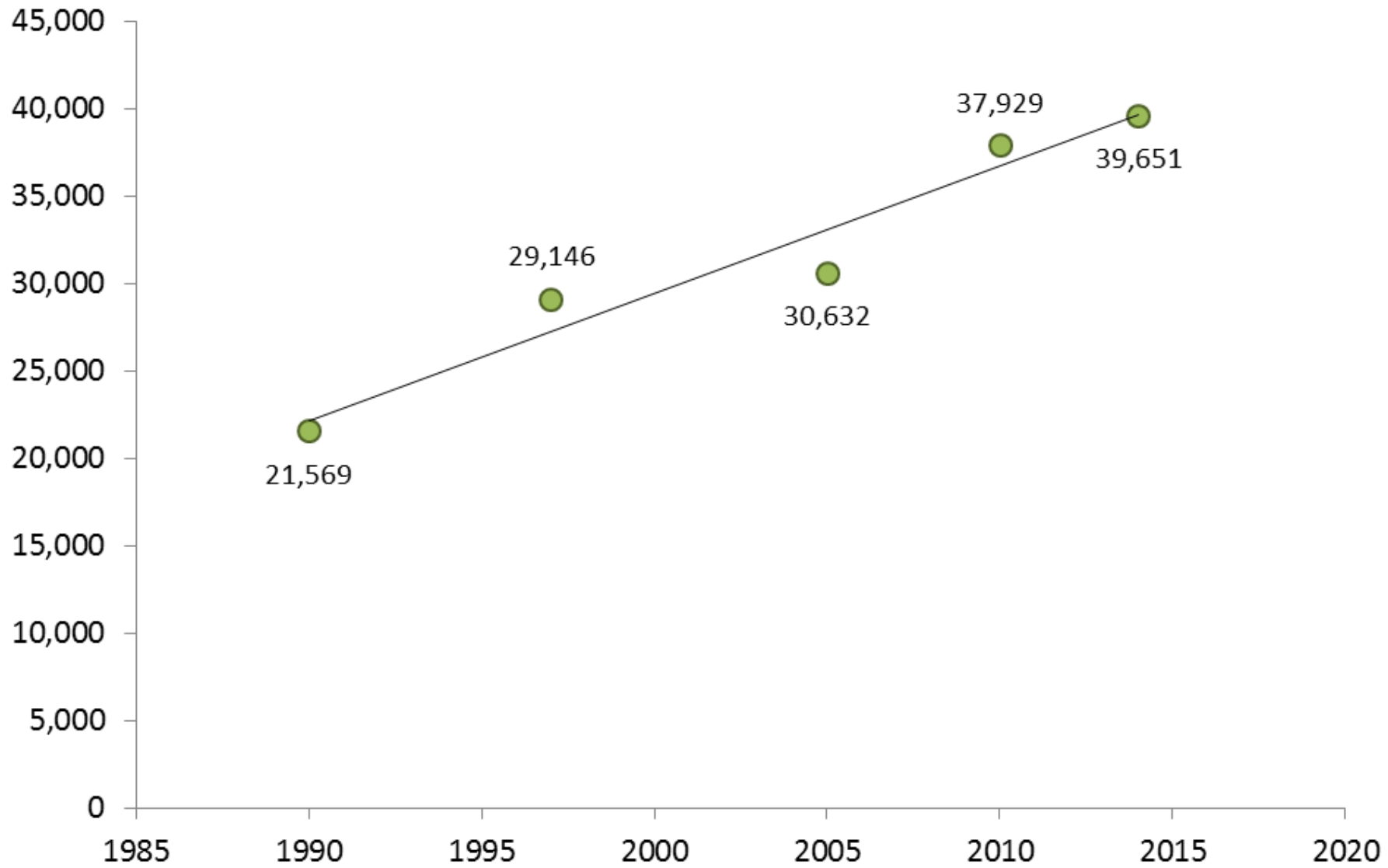
### LEMs by Census Region



Sources: The Official Catholic Directory, *Emerging Models of Pastoral Leadership*



Estimated Number of Lay Ecclesial Ministers (LEM) in the United States



## Ages of Lay Ecclesial Ministers

Under 30	5%
30 to 39	10
40 to 49	23
50 to 59	33
60 to 69	23
70 or older	6

Source: CARA/Emerging Models (2010)

- 48% are under 50
- 52% are 50 and older
- 5% are under 30 and 29% are 60 or older



## The Changing Profile of Lay Ecclesial Ministers in the U.S. Catholic Church

	2012	2005	1997	1990
Number of LEMs	37,929	30,632	29,146	21,569
Gender				
Male	20%	20%	15%	18%
Female	80%	80%	85%	82%
Race/Ethnicity				
Non-Hispanic white	88%	89%	94%	--
Hispanic/Latino(a)	9%	8%	4%	--
African American	1.6%	1.4%	1.2%	--
Asian/Pacific Islander	1.7%	1.7%	0.6%	--
Native American	0.2%	0.1%	0.1%	--
Median age	55	64	61	58
Ecclesial Status				
Vowed religious	14%	16%	28%	41%
Other lay person	86%	84%	72%	59%
Graduate or professional degree	46%	48%	42%	53%

Sources: CARA/Emerging Models (2010, 2012), DeLambo (2005), Murnion and DeLambo (1997), Murnion (1992)

- 8 in 10 are female
- Diversity is increasing
- Numbers of vowed religious serving are in decline



## Race and Ethnicity of Groups within the Catholic Church in the United States

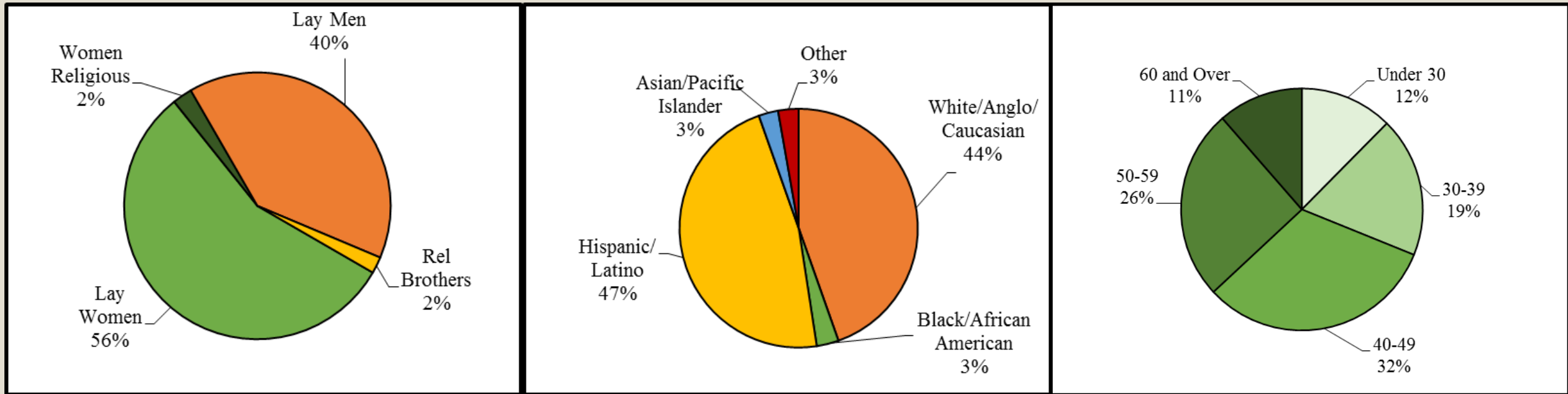
	White	Hispanic	Black	Asian	Other
<b>Clergy</b>					
Catholic priests	92%	3%	2%	3%	<1%
Catholic priests born after 1960	75	15	2	8	<1
Permanent deacons (active)	76	16	4	3	1
Ordinands (2012)	71	15	3	9	1
<b>Men &amp; Women Religious</b>					
Men and women in perpetual vows	94%	3%	1%	2%	<1%
Women professing perpetual vows (2011)	66	10	4	17	3
Men professing perpetual vows (2011)*	50	0	12	38	0
<b>Lay Persons</b>					
Lay ecclesial ministers	88%	9%	2%	1%	<1%
Adult Mass-attending Catholics (in-pew)	62	26	2	5	5
All adult Catholics	58	35	3	3	1

\*Estimates for new religious brothers are based on a small sample. Sources: The CARA Catholic Poll (CCP), CARA Pastoral Assistance Surveys and Services (PASS) In-Pew Cumulative Statistics, The Changing Face of U.S. Catholic Parishes (2011), New Sisters and Brothers in Perpetual Vows (2011), Recent Vocations to Religious Life (2009), The Class of 2012: Survey of Ordinands to the Priesthood (2012), Same Call, Different Men: The Evolution of the Priesthood since Vatican II (2012), A Portrait of the Permanent Diaconate (2012).

Race and ethnicity of those serving the Church in the U.S. strongly reflects the diversity within older generations

Those preparing for a role in LEM are more racially and ethnically diverse than those serving now

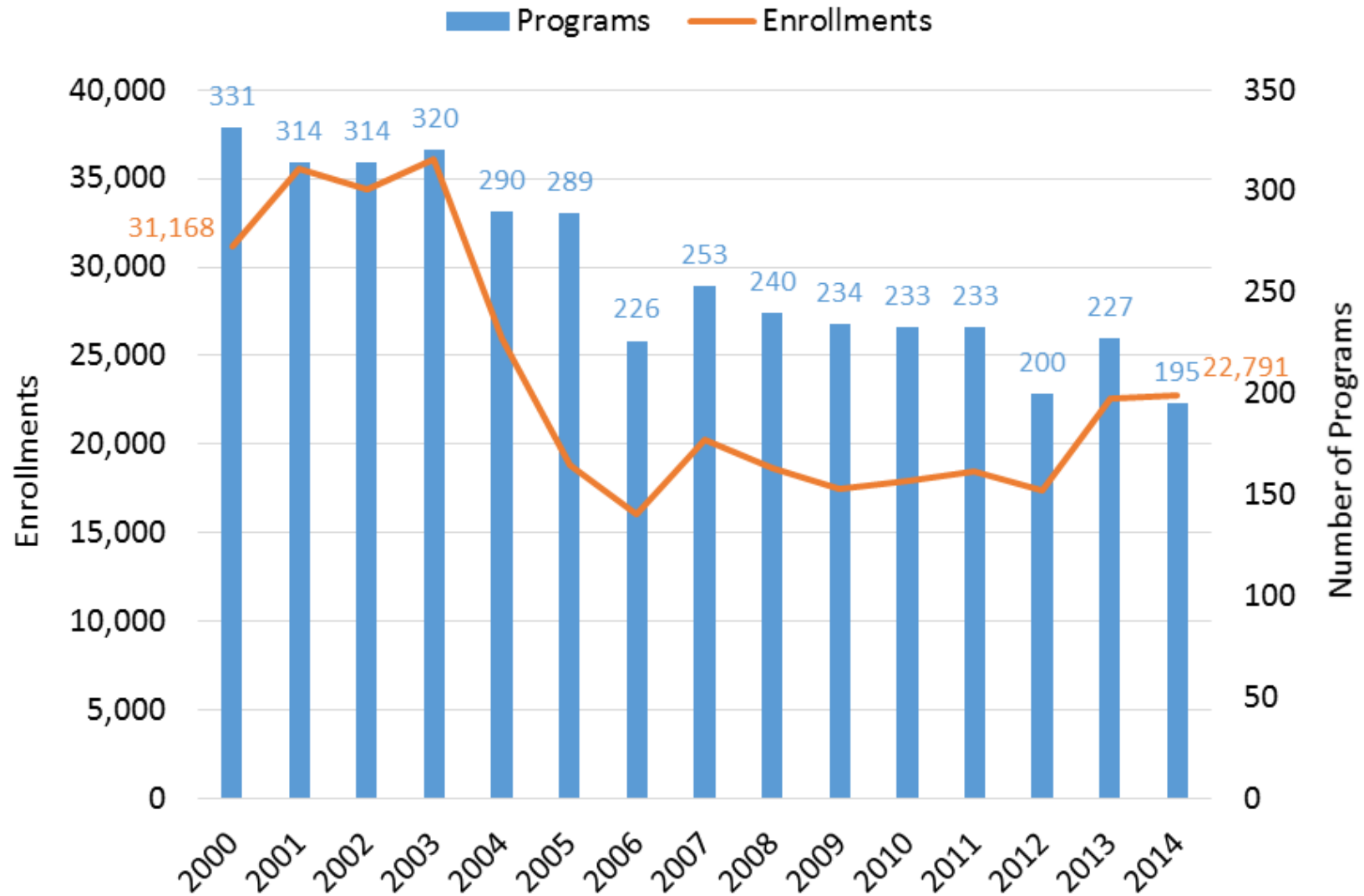
# Demographics of Those in Lay Ecclesial Formation Programs







## U.S. Lay Ecclesial Ministry Formation Programs, 2000-2014



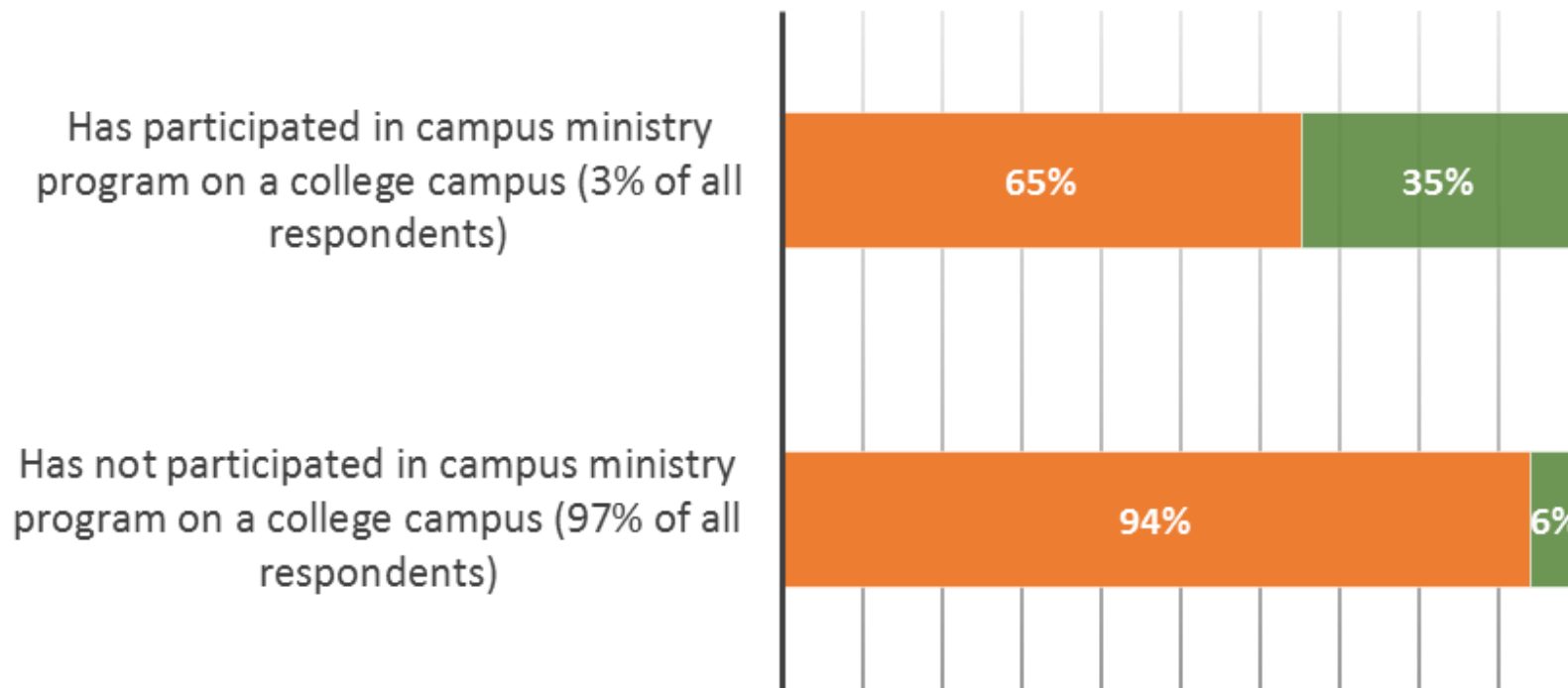
*Which of the following first led you to enter Church ministry and/or service in any setting (e.g., parish, school, hospital)?*



Service and  
“the Call”

## Consideration of a Lay Ecclesial Ministry Vocation among Never-married Catholics ages 14 and Older

■ *Has not considered* ■ *Has considered*

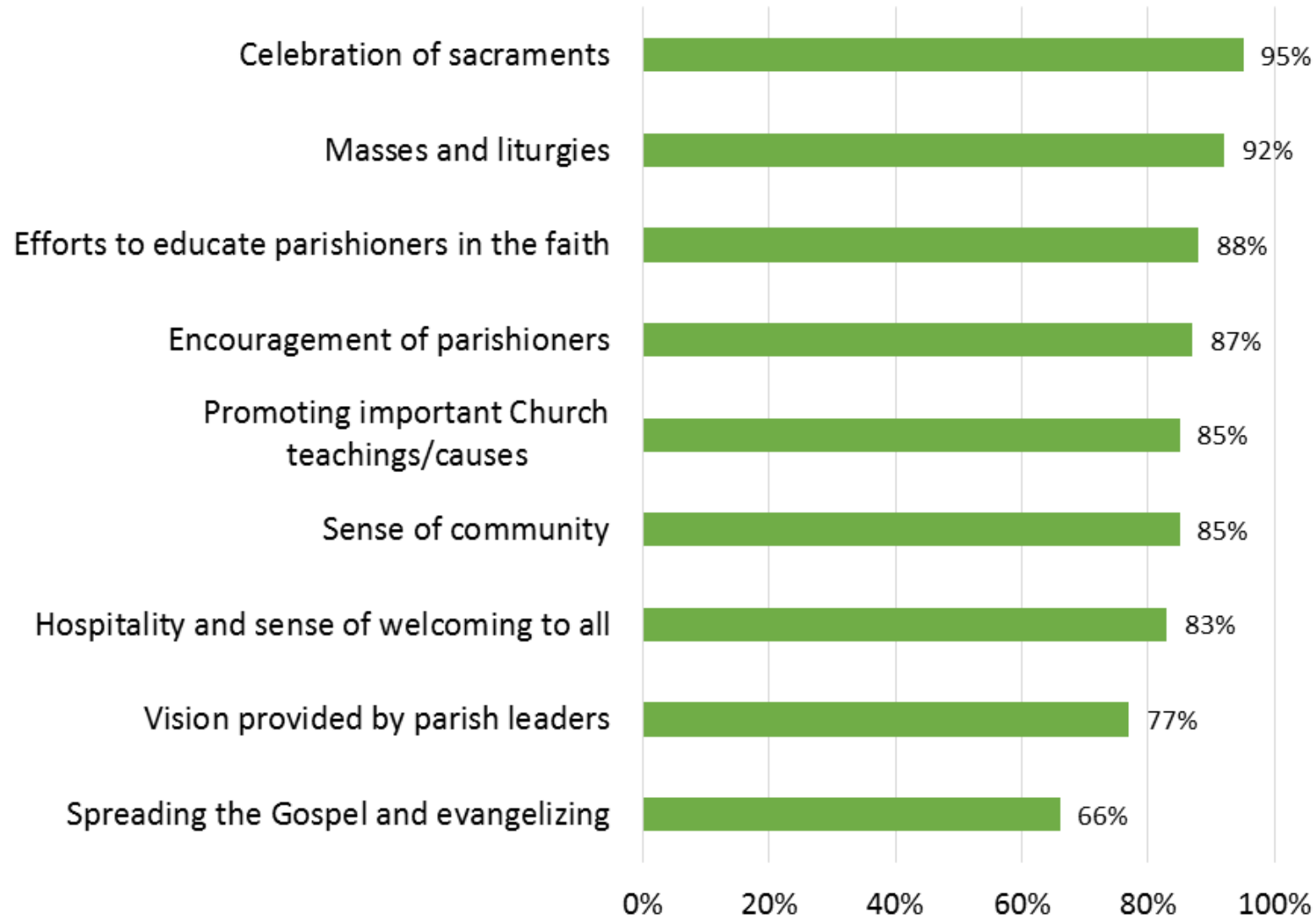




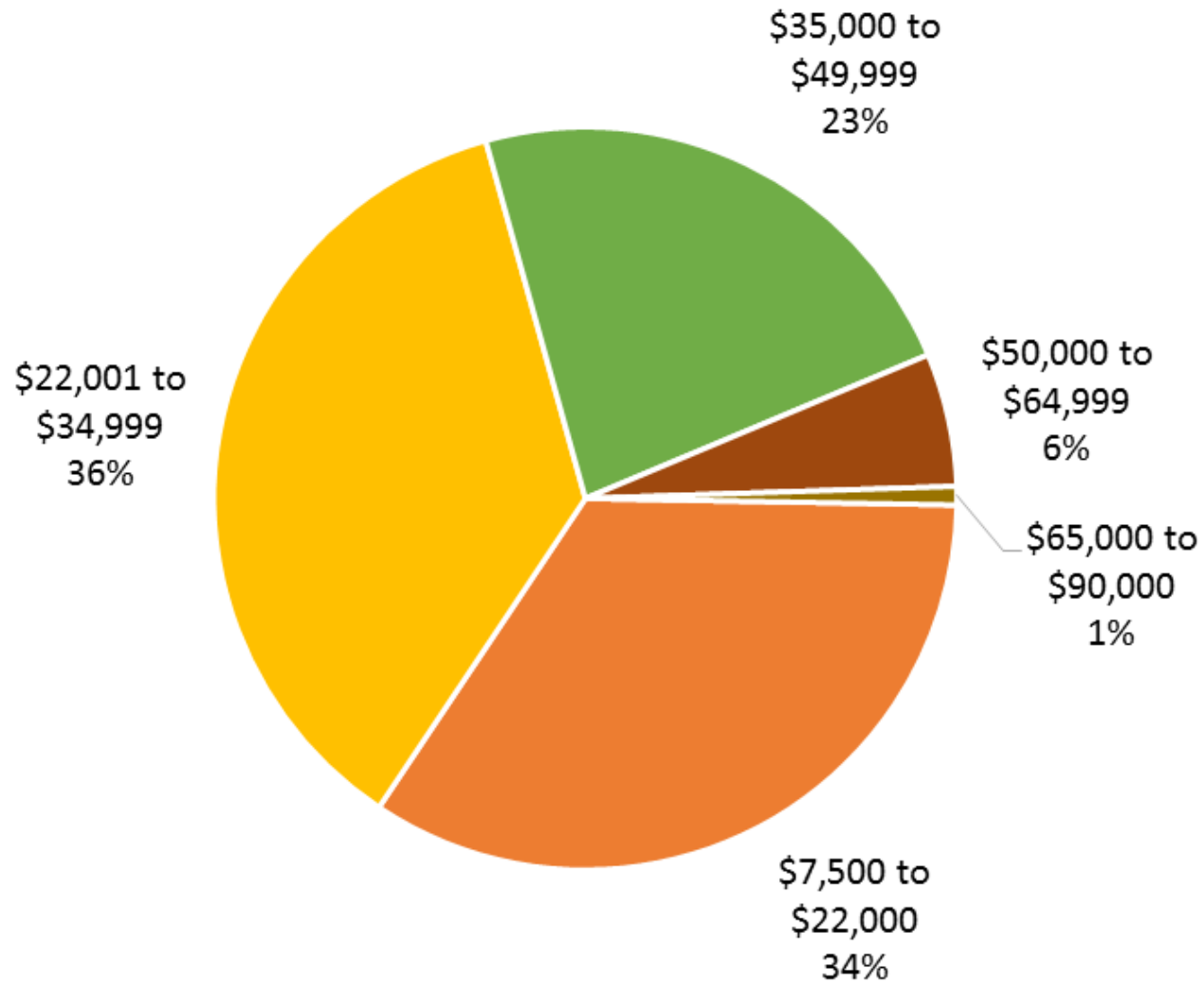
- **Faith** is among the most important or the most important part of life (3.2 times more likely to consider than those not responding as such)
  - Reads or prays with the **Bible** or Scripture at least once a week (2.9 times more likely to consider than those who do not)
  - Has volunteered in a **service** project in their local community to help people in need (2.6 times more likely to consider than those who did not)
  - Belongs to a group or organization that encourages **devotion to Mary** (2.4 times more likely to consider than those who do not)
  - Self-identifies as **Hispanic or Latino/a** (2.3 times more likely to consider than those self-identifying as Non-Hispanic white)
  - Being **involved in their parish** is “very important” to their sense of what it means to be Catholic (2.2 times more likely to consider than those not responding as such)
  - **Attended Mass** at least once a week during high school (2.1 times more likely to consider than those who did not)
  - **Attends Mass** at least once a week now (2.1 times more likely to consider than those who do not)
  - Has a household income of **less than \$40,000** per year (2.0 times more likely to consider than those with higher incomes)
  - Participates in multiple **Church-related groups, programs, and activities** (1.6 times more likely to consider than those who do not)
-



*Please evaluate these aspects of parish life in this parish:*  
LEMs responding "good" or "excellent" for their parish:



### Annual Pay for Lay Ecclesial Ministers, 2010



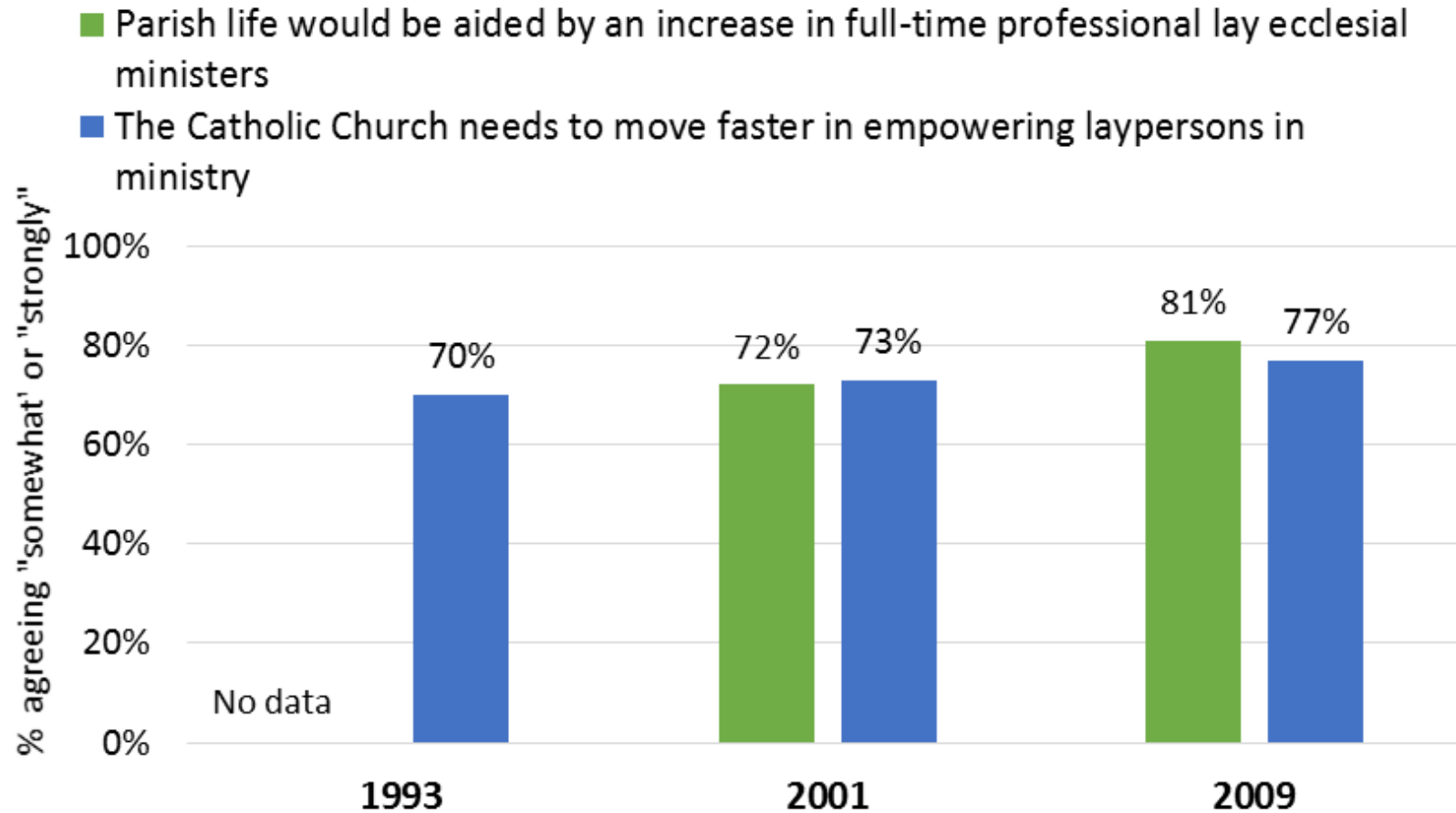
The median annual pay for LEMs, as reported to CARA by pastors and parish life coordinators in 2010 was \$27,590



For each type of compensation or benefit for your ministry listed below, how satisfied are you?

	Very much	Somewhat	A little	Not at all	Don't have benefit
Retirement or pension	33%	27%	15%	12%	13%
Life insurance	29	23	7	7	34
Health insurance	40	23	3	5	29
Dental insurance	28	23	9	6	33
Paid sick days	63	17	3	1	16
Paid vacation days	61	16	5	2	16
Tuition assistance	25	14	9	15	37

### U.S. Catholic priest's attitudes about collaboration between priests and lay ministers







**Does the parish provide or offer the following ministries, programs, or services?  
Percentage of pastors or PLCs responding "Yes":**

	<b>Has at least one LEM on staff</b>	<b>No LEMs on staff</b>
<b>Sacramental preparation</b>	99%	87%
<b>Religious education, faith formation, or catechesis for children</b>	98	88
<b>RCIA</b>	93	76
<b>Marriage preparation</b>	91	77
<b>Religious education, faith formation, or catechesis for adolescents</b>	90	75
<b>Ministries to the infirm or homebound</b>	89	75
<b>Adult faith formation</b>	87	71
<b>Ministry to elderly or seniors</b>	66	55
<b>Social services to meet individual needs</b>	66	47
<b>Ministry to the bereaved</b>	58	45
<b>Evangelization</b>	42	32
<b>Social action to educate or effect change</b>	39	25
<b>Youth ministry</b>	33	27
<b>Ministry to persons with disabilities</b>	28	22
<b>Ministry to the divorced or separated</b>	18	13



# Center for Applied Research in the *Apostolate*

---

[cara.georgetown.edu](http://cara.georgetown.edu)